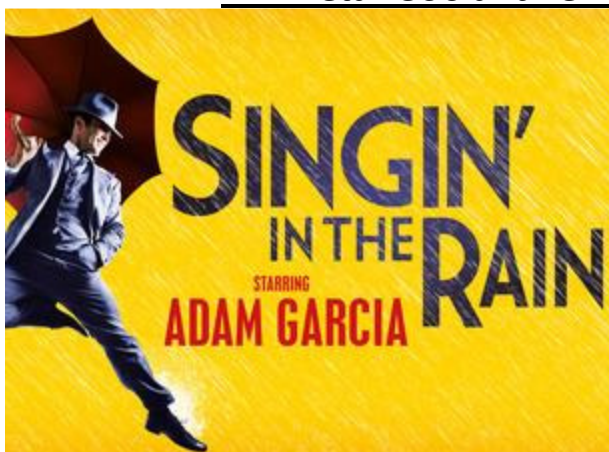


THE UNSW STAFF SOCIAL CLUB
www.staffsocial.unsw.edu.au



Starring Adam Garcia, Gretel Scarlett, Jack, Chambers, Erika Heynatz and others

Making a splash from the moment it premiered, this sensational production of **Singin' in the Rain** extended its run in Chichester UK due to unprecedented public demand, before transferring to the famous Palace Theatre in London. Now, after a sell-out West End season, unparalleled praise from critics and audiences alike, four Olivier Award nominations, and a major UK tour, **Singin' in the Rain** is set to delight Australian audiences.

This spectacular show is packed full of the charm, romance, comedy and tinseltown glamour of one of the world's best-loved movies. It tells the story of the first Hollywood musical, when the silver screen found its voice and left silent movies – and some of its stars – behind. As well as glorious songs including *Good Morning*, *Make 'em Laugh*, *Moses Supposes* and the classic *Singin' in the Rain*, the movie's choreography is brought to life, and with the help of 12,000 litres of water, the audience can enjoy one of the most iconic dance routines live on stage.

With its joyous story and sumptuous set design and costumes, **Singin' in the Rain** showers you with everything you could wish for in a hit musical!

Wednesday 7 September 2016, 1.00 p.m. . – Sydney Lyric Theatre

.Cost:

- Adult \$75 or Concession \$65 (a saving of \$20 as the Club is subsidizing an extra \$5 from the discounted group price ticket). (max. 2 tickets)
- Guests: Adults \$80.00 or concession \$70.

Due date for booking: Friday, 1/7/2016. Sorry no telephone bookings and no refunds.

For any enquiries: please contact Annabel Sutherland, 9385-4009 or a.sutherland@unsw.edu.au

 To : Annabel Sutherland, School of Electrical Engineering, , UNSW, Sydney NSW 2052
 SINGIN' IN THE RAIN - Deadline: Friday, 1/7/2016

Name : -----

School/Address----- Extn. No. -----

Email Address: -----Mobile No./Home No.: -----

---- tickets at \$75 or \$65 (concession) (max. 2 tickets) \$-----

---- tickets at \$80 or \$70 (concession) \$-----

Total \$-----

A cheque for \$----- made payable to The UNSW Staff Social Club is enclosed.
 Cash accepted (hand-delivered by prior arrangement – Elec. Eng. Building, Room G8A)
 Bank Transfer can be arranged – contact Annabel for details.